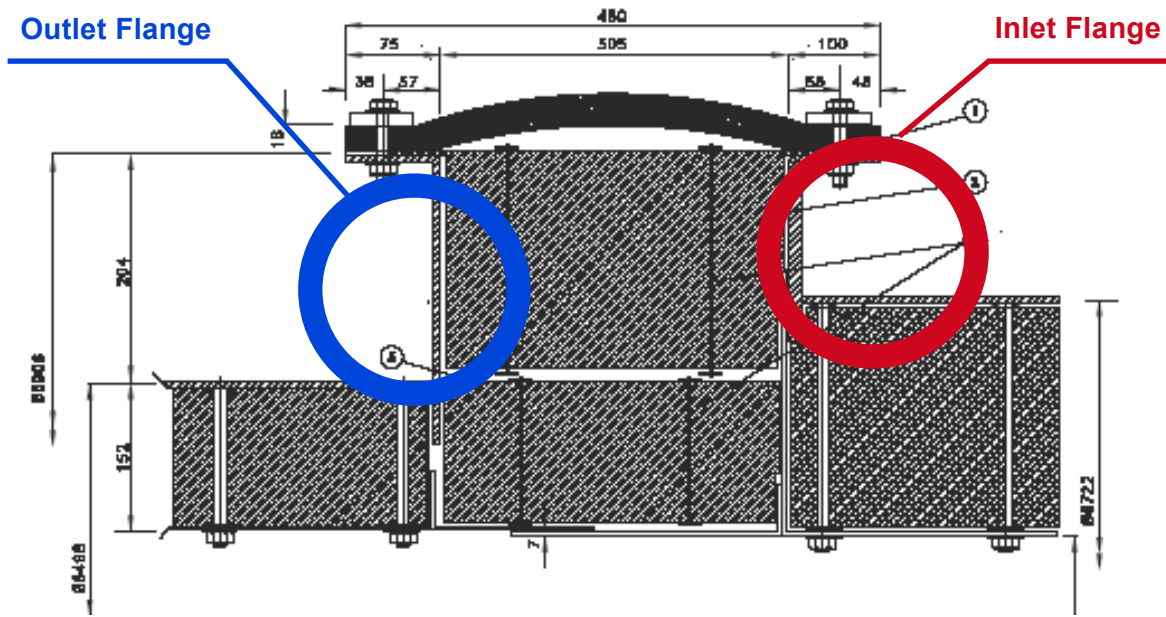


GT Outlet / HRSG Inlet Cycling Joint
Cold Casing



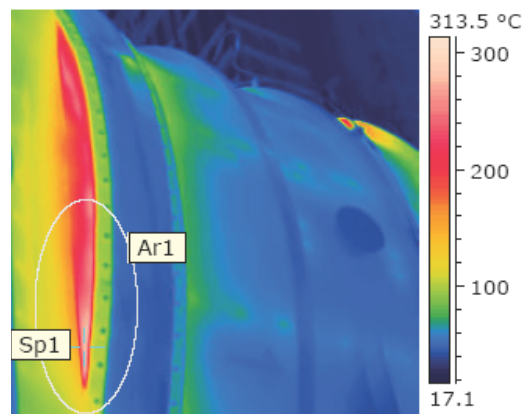
Short term solution

- Re-insulate missing pockets
- Plate gaps to duct flange
- Reconfigure bolsters
- Install flow plate
- Upgrade clamping system

Dimension inside:	Ø 6906 mm
Gas velocity / pressure static:	80 mbar
Movement:	axial: (Z) -70 mm (X) 30 mm lateral: (Y) 25 mm
Thermal transient:	Normal start of turbine

Long Term Solution

- Designed steel parts
- Improved duct interface
- New seamless internal insulation
- New fabric and bolster design



Thermographics for thermal analysis